

Discovery Cruises

www.realjourneys.co.nz

- **Fiordland National Park**
 - Northern Fiords - 5 days
 - Southern Fiords - 5 days
 - Southern Fiords - 7 days
- **Rakiura National Park**
 - Stewart Island - 6 days

Fiordland & Stewart Island



DISCOVERY CRUISES *Fiordland & Stewart Island*

DISCOVERY CRUISES

The remote south-west corner of New Zealand is one of the most isolated and beautiful parts of the planet. Protected by both geography and law, it is a land of dense rainforest, pristine fiords and rare native wildlife.

Every winter, when the weather is most calm, Real Journeys operates multi-day Discovery Cruises to Fiordland and Stewart Island. Led by a specialist nature guide, the cruises offer a unique opportunity to explore these secluded regions.

Discovery Cruises have a leisurely and flexible itinerary, enabling you to venture ashore with the nature guide and explore various sites of natural and historical interest. Passenger numbers are limited to 34 and the atmosphere is friendly and relaxed.

Discovery Cruises attract people of all ages. All you need is an average level of fitness, a love of the outdoors and a sense of adventure.



OPTIONS

SOUTHERN FIORDS - 5 days (Fiordland National Park)

Begin your journey with a crossing of beautiful Lake Manapouri and Wilmot Pass to join the Milford Wanderer waiting in Doubtful Sound. For the next five days you will explore three of New Zealand's most stunning fiords - Doubtful, Breaksea and Dusky Sounds. Highlights include cruising in magnificent scenery, wildlife viewing and visits to historic sites.

- Coach connections available from Queenstown and Te Anau

SOUTHERN FIORDS - 7 days (Fiordland National Park)

This extended cruise includes all the highlights of the Southern Fiords 5 days option and then continues further south to Chalky and Preservation Inlets. A one-way helicopter transfer between West Arm and Preservation Inlet increases the time available for cruising and walks ashore to places of interest, including the lighthouse.

- Coach connections available from Queenstown and Te Anau

NORTHERN FIORDS - 5 days (Fiordland National Park)

Meet your fellow passengers in Te Anau and travel by luxury coach on the stunning overland route to Milford Sound to meet the Milford Wanderer. Then cruise south to Doubtful Sound along the Fiordland coast viewing the untouched wilderness of George, Caswell and Bradshaw Sounds. These seldom visited fiords have a fascinating past.

- Coach connections available from Queenstown and Te Anau

"New friendships are quickly made on board - there's a sense of eager anticipation of sharing a real adventure. Everyone has chosen to cruise the southern latitudes rather than the South Pacific."



STEWART ISLAND - 6 days
(Rakiura National Park)
From Bluff cruise across Foveaux Strait to Stewart Island's eastern shoreline. Over the next six days you will discover isolated Port Pegasus, Port Adventure and Paterson Inlet. Highlights include wildlife viewing, visits to historic sites and guided walks through rainforest and along deserted beaches.

- Coach connections available from Invercargill



To find out more Freephone 0800 62 62 76 or visit www.realjourneys.co.nz

FIORDLAND NATIONAL PARK

Fiordland National Park is the largest national park in New Zealand covering an area of more than 12,000 square kilometres. Its coastline is home to a variety of native wildlife including New Zealand fur seals, dolphins and rare native birds. On occasion, we even see whales as they make their annual migration up the coastline.

NORTHERN FIORDS

The most famous of Fiordland's northern fiords is Milford Sound - a world-renowned natural wonder. Moving south along the coast - George, Caswell and Bradshaw Sounds are remote and peaceful with a surprisingly rich human history.

DOUBTFUL SOUND

Doubtful Sound is a massive wilderness area of rugged peaks, impenetrable rainforest and twisting, hidden fiords. Fur seals and bottlenose dolphins inhabit the deep dark waters, and rare penguins nest along the rugged shores.

BREAKSEA & DUSKY SOUNDS

Three hours cruising to the south of Doubtful Sound are the beautiful Breaksea and Dusky Sounds. Between them these two fiords boast more than 350 islands and offer many idyllic spots for mooring and trips ashore. Captain Cook visited Dusky Sound in 1773 and it was here that he brewed the country's first beer. A trip ashore at Pigeon Island to learn about Richard Henry's early conservation efforts is another highlight.

CHALKY & PRESERVATION INLETS

These southernmost fiords provide excellent opportunities to disembark and explore the wind-swept coastline and broad beaches. Their natural harbours attracted early whalers and miners, whose attempts to tame the landscape are still evident today. View fascinating historic sites and abandoned settlements.

RAKIURA NATIONAL PARK - STEWART ISLAND

Stewart Island combines breathtaking scenery, rare wildlife and fascinating history. The southern skies often blaze with colour at dawn and twilight, reflecting the island's Maori name Rakiura - land of the glowing skies.

PORT ADVENTURE

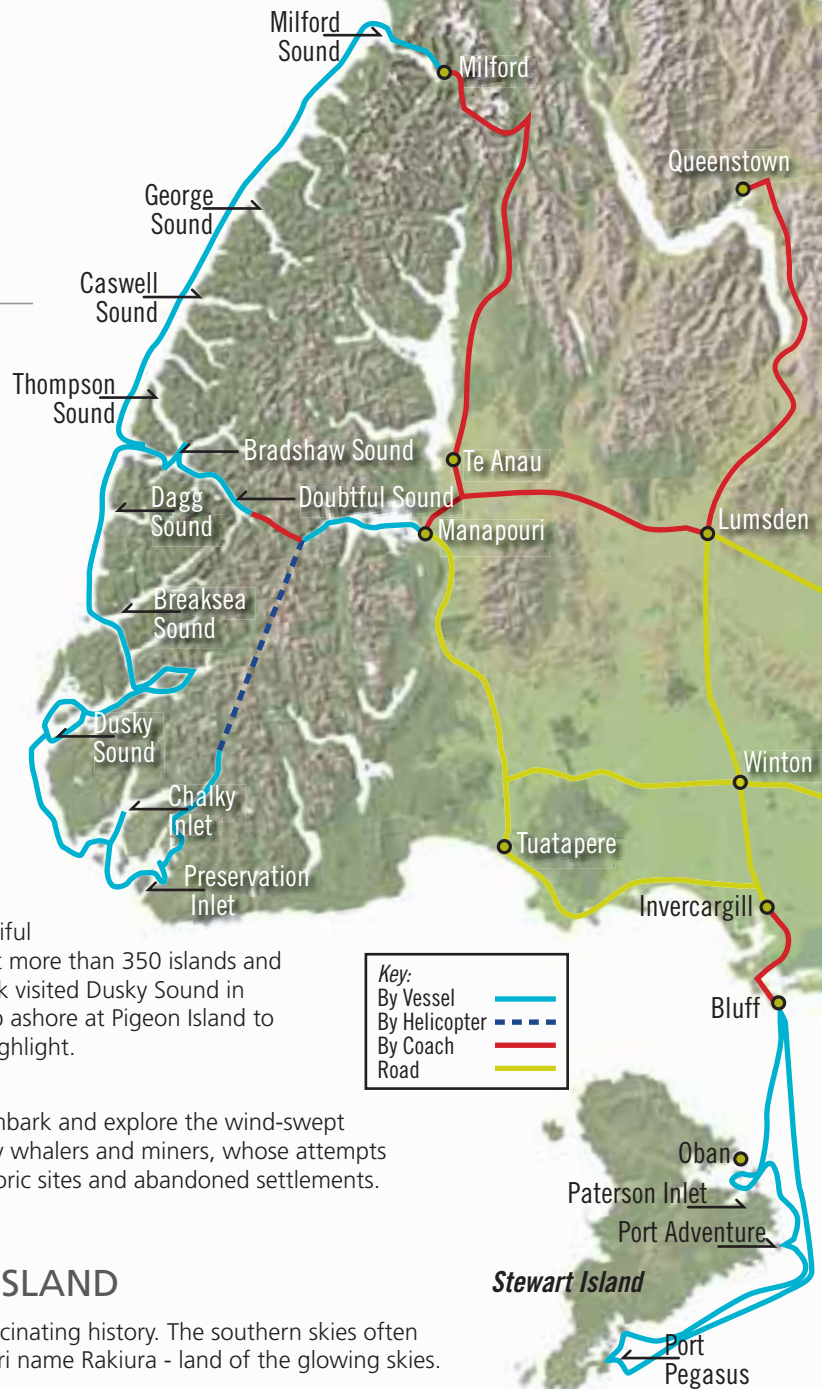
This sheltered harbour has experienced more than its share of human adventures - from iwi Maori to European settlers and whalers. Today, only remnants of their early activities remain. As dusk falls there is a chance you will hear and perhaps see kiwi.

PORT PEGASUS

Stretch your legs with walks ashore in the North Arm or climb up to Bald Cone to admire the views. At other times we visit the remains of early settlements and, if weather permits, the nearby sea lion colony. Belltopper Falls and Smugglers Cove are other highlights.

PATERSON INLET

Disembark and explore Ulva Island - a wildlife sanctuary that is home to some of New Zealand's most rare bird and plant species. Then cruise to Golden Bay and wander over the hill to the village of Oban, New Zealand's southernmost community.



MILFORD WANDERER



The Milford Wanderer is a modern motorised vessel that has been purpose built for navigating southern New Zealand waters. Designed along the lines of a traditional trading scow, it has old world charm combined with modern facilities and the latest in safety equipment.

With a maximum of 34 passengers per trip, the atmosphere on board is friendly and relaxed, and there's plenty of space to spread out and unwind. You'll quickly get to know the crew and your fellow travellers.

To enable you to explore the shoreline the vessel has an aluminium tender craft (runabout with landing steps) or, if you prefer, you can paddle about in one of our many kayaks. No experience is necessary - the crew will show you what to do. Specialist nature guides will accompany you on walks ashore and provide evening talks.

Throughout the cruise the on board chef prepares a selection of mouth-watering meals and desserts as well as morning and afternoon teas. We have a range of books and games in the saloon and a cash bar operates in the evening.



● MILFORD WANDERER

- Warm, comfortable bunkrooms (two passengers per sleeping compartment)
- Duvets, sheets and towels provided
- Modern bathroom facilities with hot showers
- Cosy dining saloon
- Hearty meals prepared by on board chef
- Specialist nature guides
- Kayaks and tender craft available
- Open bridge policy

"Some of the clearest and finest weather occurs during winter, making this the ideal time for cruising. However, rain or shine the scenery is spectacular and it all adds to the experience."

DISCOVERY CRUISES

The essence of these multi-day adventures is spectacular wilderness settings, flexible itineraries, lots of variety, a friendly and professional crew and a vessel specially designed for cruising southern New Zealand.

The people who cruise with us on these voyages range from the young to the young at heart. Some are drawn by the magnificent scenery and others by the natural and human heritage. However, all share a desire to experience something very special.

FARES

If a current fare sheet is not included in this brochure, please contact Real Journeys or visit our website
www.realjourneys.co.nz/discovery

CHARTER CRUISES

From May to August, the Milford Wanderer is available at times for private charter. Details and rates are available on request from Real Journeys, Manapouri.



*For all enquiries and reservations contact
Real Journeys Visitor Centre*

MANAPOURI:
Pearl Harbour
PO Box 27
Manapouri 9643

Freephone 0800 62 62 76
Phone 03 249 6602
manapouri@realjourneys.co.nz
www.realjourneys.co.nz



RJDC11/09

▼ Gilbert Islands, Breaksea Sound